



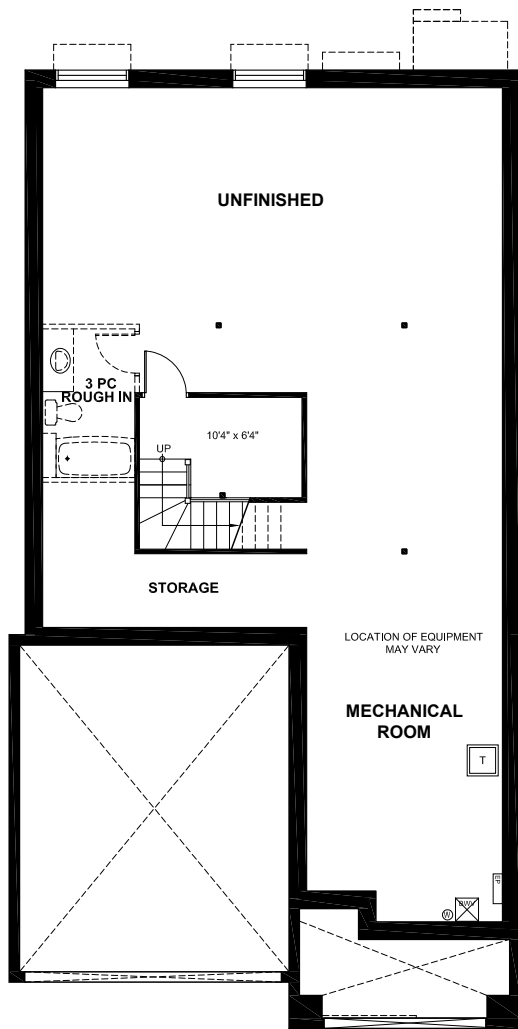
ELEVATION 1



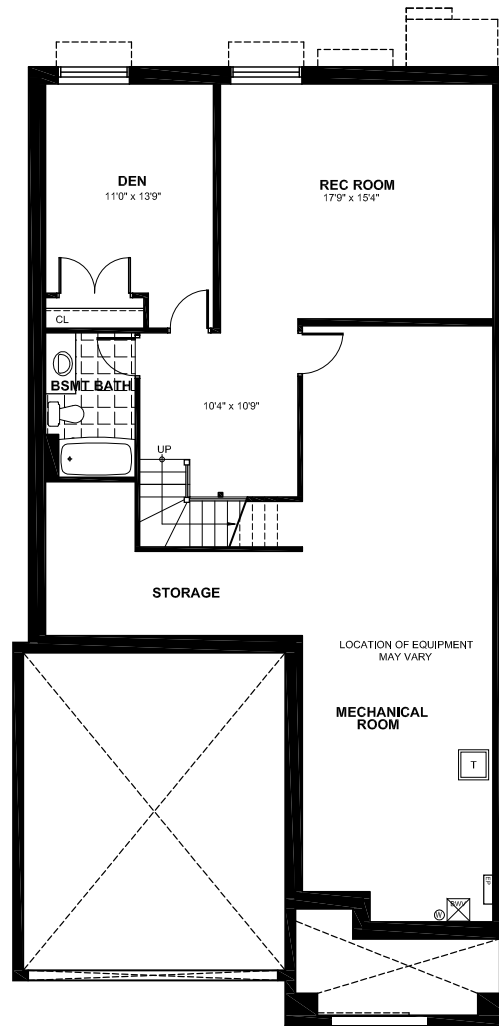
the
GALLERY
collection
IN MORRIS VILLAGE

THE LYON
905 • 1530 SQUARE FEET

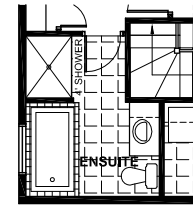




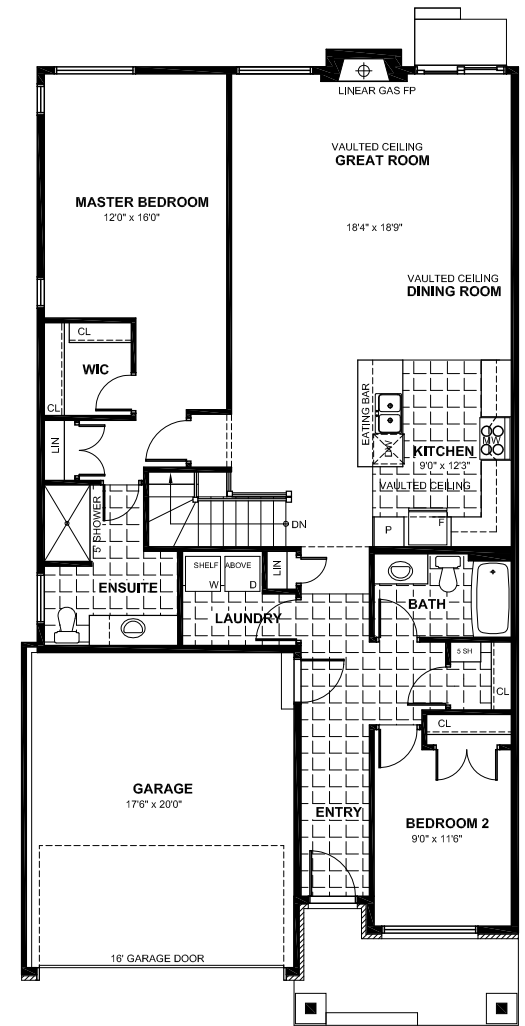
**UNFINISHED
BASEMENT PLAN**



**OPTIONAL FINISHED
BASEMENT PLAN**



OPTIONAL ENSUITE



GROUND FLOOR PLAN

THE LYON

905 ▸ 1530 SQUARE FEET



Materials, specifications and floor plans are subject to change without notice. All house renderings are artist's conceptions. All floor plans are approximate dimensions. Actual useable floor space may vary from stated area. E. & O. E.