



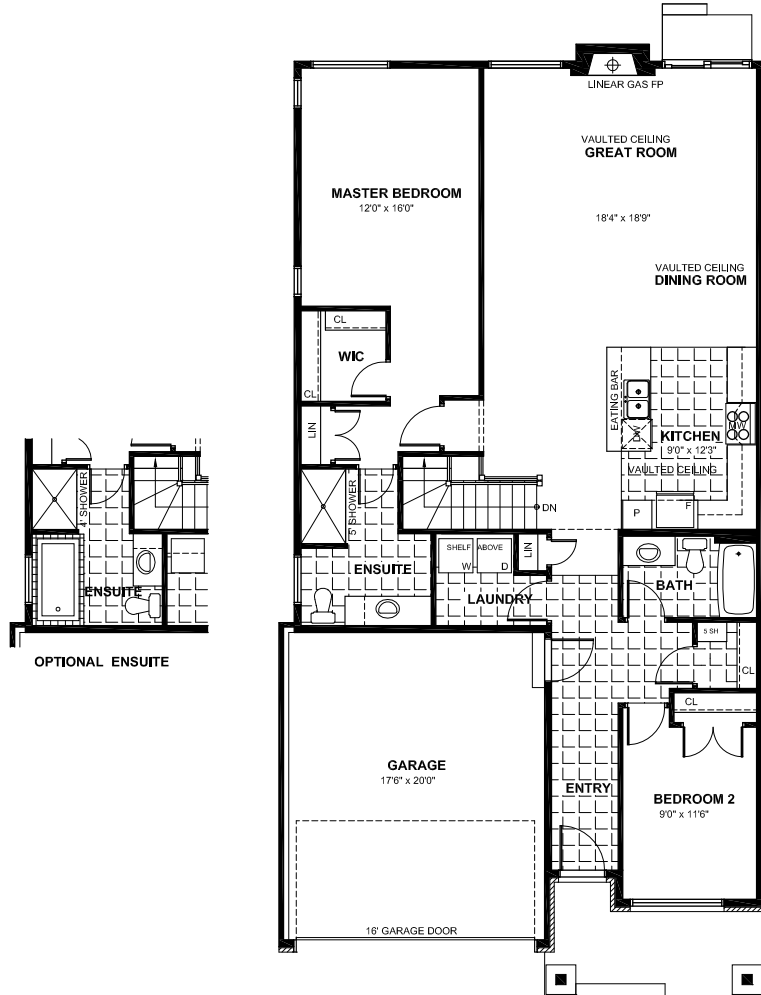
ELEVATION 1



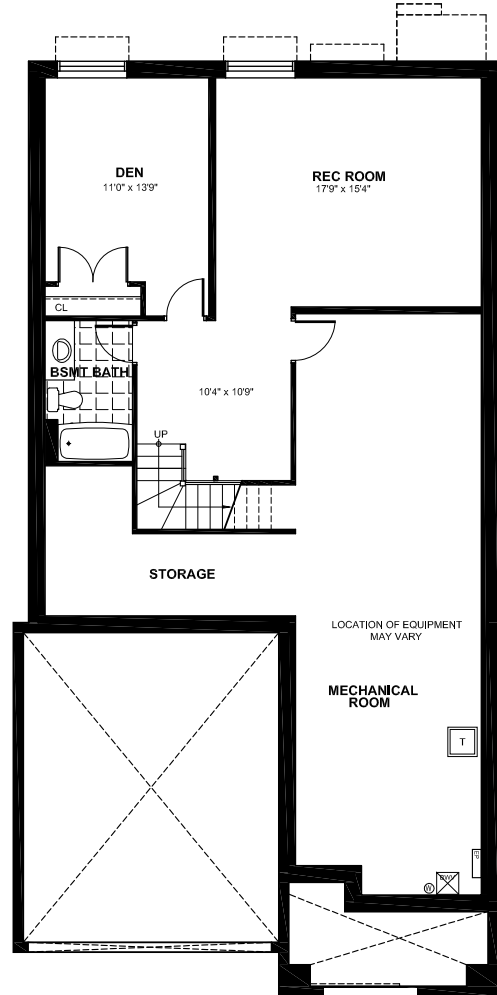
the  
**GALLERY**  
collection  
IN MORRIS VILLAGE

**THE LYON**  
905 • 1530 SQUARE FEET

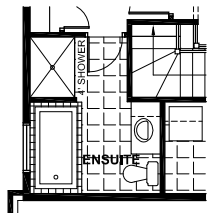
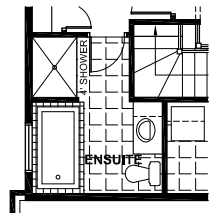




**GROUND FLOOR PLAN**



**OPTIONAL FINISHED BASEMENT PLAN**



**THE LYON (905)**  
1530 SQUARE FEET



Materials, specifications and floor plans are subject to change without notice. All house renderings are artist's conceptions. All floor plans are approximate dimensions. Actual useable floor space may vary from the stated area. E.&O.E.