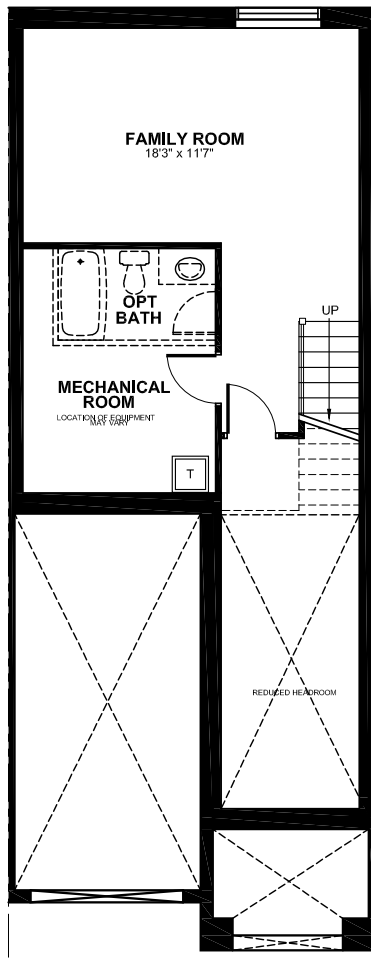




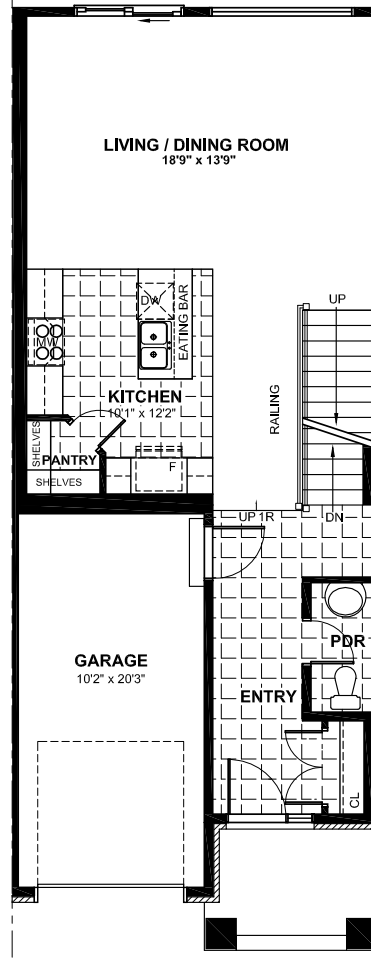
Gallery TOWNS

**The Marseille (102)**  
1842 square feet  
( includes 274 sq.ft. Finished Lower Level)

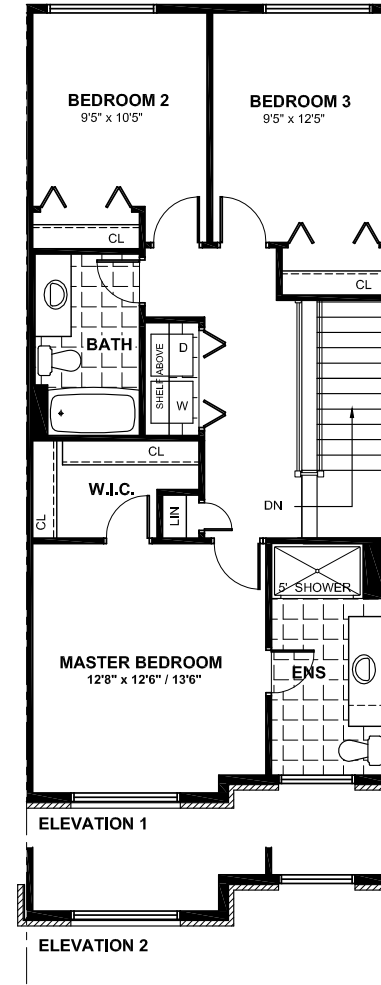
All house renderings are artist's conceptions. All floor plans are approximate dimensions. Actual useable floor space may vary from the stated area. E. & O.E.



FINISHED BASEMENT PLAN



GROUND FLOOR PLAN



SECOND FLOOR PLAN



# The Marseille (102)

1842 square feet  
( includes 274 sq.ft. Finished Lower Level)



All house renderings are artist's conceptions. All floor plans are approximate dimensions. Actual useable floor space may vary from the stated area. E. & O.E.